



FOSTER
& CO.

22

23

Frederick Street

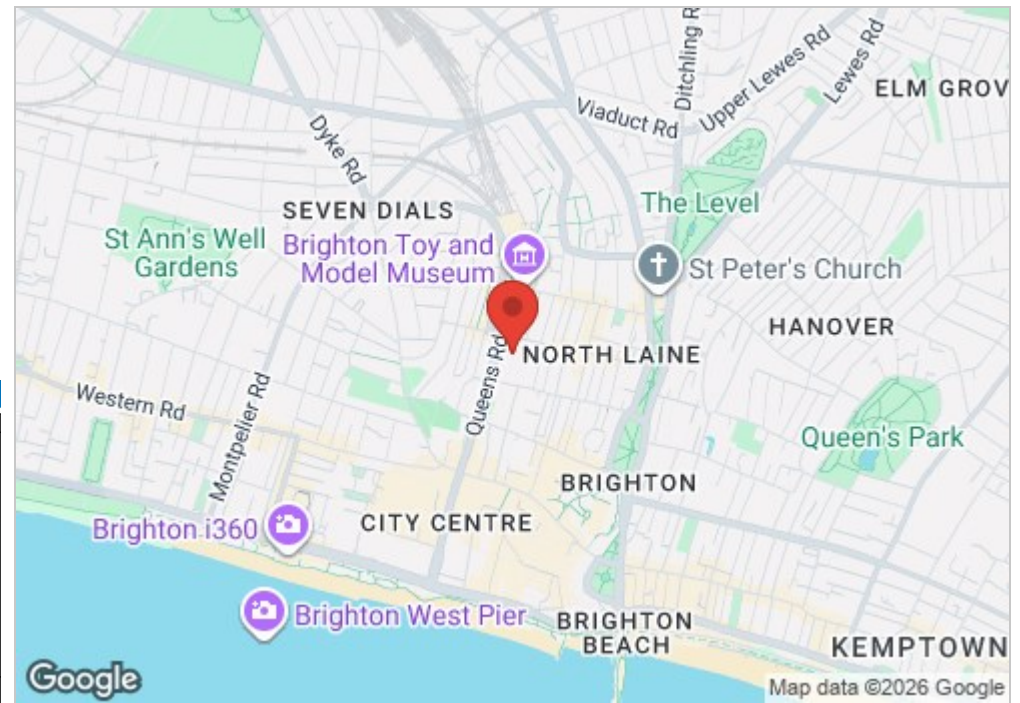
Brighton, BN1 4TA

Asking price £395,000

Lovely two bedroom freehold property in a highly sought after city centre location close to Brighton Laines with private front garden. Brighton mainline station is just a few moments away and so is the perfect location for commuters to London.

Ground floor accomodation comprises of spacious reception room leading to fitted kitchen space and bathroom next door. First floor has two light and bright double bedrooms. Master bedroom to the front and rear bedroom with spacious loft area accessed by ladder.

This home allows for a fabulous lifestyle being so centrally located to everything that this fantastic vibrant and cosmopolitan city has to offer. The famous Brighton Laines & beach are on your doorstep. Great local pubs and coffee shops serving good food (try The Foundry, Grow 40, Black Mocha, Three Jolly Butchers). Brighton Mainline Railway Station is moments away and runs frequent services to Gatwick (30 minutes), London Victoria (56 minutes) and London Bridge (63 minutes).

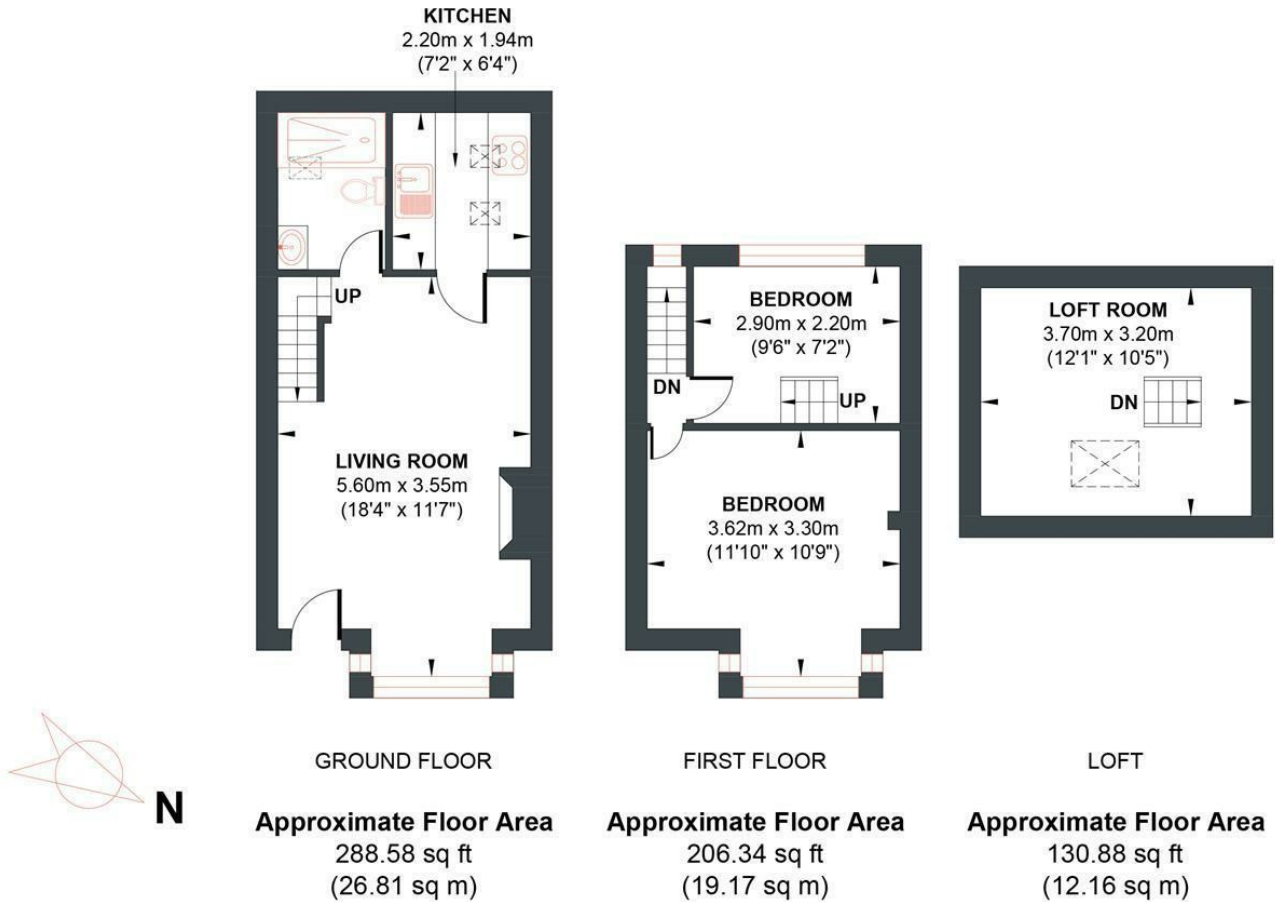


Energy Efficiency Rating		
	Current	Potential
Very energy efficient - lower running costs		
(92 plus) A		
(81-91) B		
(69-80) C		
(55-68) D		
(39-54) E		
(21-38) F		
(1-20) G		
Not energy efficient - higher running costs		
	51	83
England & Wales		EU Directive 2002/91/EC

- Freehold
- 1 Bathroom
- Close to Brighton Station
- Kitchen
- No Chain
- 2 Bedrooms
- Central Location
- Front Patio Garden
- Living Room

FREDERICK STREET

Approx. Gross Internal Floor Area 58.14 sq m / 625.8 sq ft
Illustration for identification purposes only, measurements are approximate, not to scale.



Foster & Co and their clients give notice that:

These sales particulars do not constitute any part of an offer of contract and are for guidance for prospective purchases only and should be not relied upon as a statement of fact.

We are not to be held responsible for material information that has not been given to us by our client at the time of marketing.

All measurements are approximate



